



Part of the **WINNELLIE** Group



GLOBALY CONNECTED  
**LOCALLY INVESTED**

MINING · CONSTRUCTION · ENERGY

08 8297 9700  
[www.waltan.com.au](http://www.waltan.com.au)  
[sales@waltan.com.au](mailto:sales@waltan.com.au)

Leading provider of industrial and construction tools and equipment to the mining, construction and oil & gas industries since 1999





# OUR TRUSTED PARTNERS

---

**ENERPAC** 

**Parker**

**HYDAC**

**Mann Tek**<sup>®</sup>

**Rexroth**  
Bosch Group

**EATON**

**STAUFF**



*The Right Connection<sup>®</sup>*

**oliver**valves



**hydratight**  
PROVIDING SAFE RELIABLE CONNECTIONS



**rotork**<sup>®</sup>





# TOOLS

**WALTAN**  
TOOLS-EQUIPMENT  
Part of the WINNELLIE Group



# INDUSTRIAL HYDRAULIC TOOLS

For more than 50 years Enerpac hydraulic tools have delivered reliable and dependable solutions for virtually every industrial application. Our products are designed to increase productivity and make work safer and easier to perform. We're focused on providing our customers with the most comprehensive line of globally supplied, locally supported industrial tools and heavy lifting solutions.

## OUR HYDRAULIC TOOL RANGE INCLUDES:

- Cylinders
- Pumps
- Gauges
- Presses
- Hydraulic punches
- Bearing pullers
- Cutters & crimpers
- Hoses, adaptors and accessories



## LIFTING CYLINDERS

- Single Acting
- Lightweight Aluminium
- Low Height
- Hollow Plunger
- Double Acting
- High Tonnage
- POW'R LOCK Lifting Jacks



## SINGLE / DOUBLE ACTING PUMPS

- Lightweight Manual Series
- Steel Manual Series
- Pneumatic PAT Series
- Electric ZU4 Series

# ENERPAC



## BOLTING TOOLS

- Square Drive Torque Wrenches
- Cassete Drive Torque Wrenches
- Electric/Pneumatic Pumps
- Flange Alignment Tools
- Bolt Tensioners



## POW'R LOCK

- 200T capacity
- Models with 14" or 26" stroke
- Easy manoeuvrability
- Simple 2 button control
- Automatic Safety Locking
- Perfect for lifting large machinery



# HYDRAULIC TORQUE TOOLS

Enerpac's comprehensive range of mechanical and hydraulic torque tools provides precise & effective force to make your work more productive, safer, and easier to perform. From joint assembly, controlled tightening, torque wrench pumps to joint separation, Enerpac torque equipment, tools & accessories (including hydraulic torque wrenches) offer the solution best-suited to the project, available from one source.

## THESE TORQUE TOOLS INCLUDE:

- Square drive torque wrenches
- Cassette torque wrenches
- Torque wrench pumps
- Pneumatic torque wrenches
- Flange alignment tools
- Flange spreaders
- Nutsplitters
- Hoses & accessories

Torque tools we supply, calibrate and service

For more torque tool information see [www.enerpac.com/en-au](http://www.enerpac.com/en-au)



**SQUARE DRIVE  
TORQUE  
WRENCHES**



**CASSETTE  
DRIVE TORQUE  
WRENCHES**



**FLANGE  
ALIGNMENT TOOLS**



**FLANGE SPREADER**



# INDUSTRIAL CONSTRUCTION TOOLS

Since 1950, Atlas Copco Australia have known the tools of the trade when it comes to designing construction equipment. Ergonomic, easy to handle and reliable, they will be your best friend for heavy-duty construction work.

## OUR CONSTRUCTION TOOL RANGE CONSISTS OF:

- Hydraulic, pneumatic and petrol breakers
- Hydraulic and pneumatic hammers
- Hydraulic, pneumatic and petrol rock drills
- Pneumatic dust collectors
- Core Drills
- Concrete Scabbler and Needle Scalers
- Hydraulic power packs



## HYDRAULIC TOOLS

- Post Drivers
- Dewatering Pumps
- Core Drills
- Saws
- Breakers
- Power Packs



## PNEUMATIC TOOLS

- Breakers
- Chippers
- Rock Drills
- Rivet Busters
- Tampers
- Scabblers



*Atlas Copco*



## PETROL TOOLS

- Breakers
- Tie Tampers
- Combi - Drill/Breaker



## WORKING TOOLS AND ACCESSORIES

- Hoses
- Lubricators
- Fittings
- Chisels
- Moils
- Tamper pads

WE ALSO SUPPLY, REPAIR AND SERVICE



# INDUSTRIAL POWER TOOLS

At Chicago Pneumatic we consider ourselves to be more than a company. We are a global, connected family who shares a genuine passion for performance. We believe in performance that stands the test of time. Our global R&D centers are developing intelligent products, based on technology that you can rely on.

## OUR PNEUMATIC TOOL RANGE CONSISTS OF:

- Impact Wrenches
- Nut Runners
- Drills
- Grinders
- Sanders
- Cordless tools
- Battery Operated Torque Tools



## PNEUMATIC TOOLS

- Impact Wrenches
- Nut Runners
- Ratchet Wrenches
- Drills
- Grinders



## CORDLESS TOOLS

- Drills
- Torque Wrenches
- Impact Wrenches
- Grinders
- Polishers



## WORKSHOP EQUIPMENT

- Bottle Jacks
- Air/Hydraulic Jacks
- Jack Stands
- Torque Wrenches



## ACCESSORIES

- Air Line Accessories
- Consumables
- Batteries and Chargers
- Spare Parts and Service





# PNEUMATIC TORQUE TOOLS

## PNEUMATIC, BATTERY POWERED AND ELECTRONIC PISTOL TORQUE TOOLS GRIP WRENCHES



- Reliable and dependable torque tools for the installation and removal of heavy duty fasteners in a variety of industries that require accuracy, power and safety.
- Equal power in both forward and reverse allows more flexibility for tough maintenance jobs
- Individually calibrated and traceable to NATA Standards
- Accuracy of +/-5% and repeatability of 2%
- 88 times less vibration than impact wrenches
- Exclusive low profile reaction arm takes operational load off the operator, reducing injuries and operation costs





# PROCESS CONTROL





# GAUGES, CLAMPS & ACCESSORIES



## GAUGES

- Suitable for hydraulic oil and gaseous media that do not attack any copper base alloy (Please consult our office before you use SPG with other media)
- Available in nominal sizes 63 and 100
- Standard thread form: BSP
- Housing made out of stainless steel (1.4301)
- Sight glass made out of acrylic
- Glycerine filled
- Standard dual scales with pressure indication in bar and PSI
- U-bolt or flange mounting kit on request



## CLAMPS

STAUFF Clamps enable quick and easy pipe and hose installations as well as a clean distinct pipe layout and vibration and noise reducing properties.

Applications are almost unlimited. Custom sizing and configurations are available upon request. Wide product range, all areas of pipe, tube, and hose installation are covered:

- Industrial hydraulics
- Mobile hydraulics
- Marine hydraulics
- Offshore
- General industrial pipe construction
- Mining industry
- Nuclear reactor construction
- Instrumentation and control technology
- Pneumatics



## TEST EQUIPMENT

STAUFF Test offers a comprehensive range of test points and accessories for hydraulic and pneumatic systems.

Varied spectrum of screw-in test points and test couplings for tube fittings, which are oriented to international standards, guaranteed to comply with the requirements of applications all over the world.

Extensive range of accessories, including measuring hoses and pressure gauges (mechanical and digital/electronic).



## BALL VALVES

STAUFF Ball valves are available in a variety of configurations and a range of sizes to suit most Industrial applications including mobile, mining and marine hydraulics.

Specially configured valves are also available for specialised applications including for Gas, Paint and lacquer and Foam.



# MAXSEAL SOLENOID VALVES

Proven in the field for over 50 years, the IMI Maxseal brand offers extremely high quality stainless steel solenoid valves designed and manufactured with reliability and integrity in mind.

IMI Maxseal valves perform exceptionally well in harsh environments all over the globe and are often associated with offshore oil & gas applications, but are also used onshore, particularly in coastal environments where a fully stainless steel construction is advantageous.

**For more information please contact our dedicated team.**

# NORGREN PRECISION LINE

From offshore oil and gas platforms to refineries and chemical plants, you'll find our precision components at the heart of the energy and chemical industry's most marvellous machines – with market leading fluid control products tackling the most extreme operating conditions and engineering challenges on the planet.

At the heart of our offering are stainless steel solenoid valves, air preparation equipment, pneumatic and hydraulic pressure switches, I/P and E/P convertors, 2/2 and 3/2 process valves and redundant valve manifold systems (RVM).

Find out how our product offering covers a wide range of applications including onshore and offshore extraction and distribution.



WE ALSO SUPPLY **FESTO** 



# INSTRUMENTATION

Our manifolds, fittings and valves offer superior performance with a comprehensive range of remote and direct mount instrumentation manifolds to suit all types of instrumentation installations, specifications and applications.

AS THE PARKER PREMIER DISTRIBUTOR  
FOR NORTHERN TERRITORY  
WE STOCK AND SUPPLY:

- Fittings/Quick Couplings
- Ball/Plug Valves
- Check Valves
- Filters
- Relief Valves
- Bleed and Purge Valves
- Metering Valves
- Needle Valves
- Manifold Valves
- Diaphragm Valves
- Regulators
- Pressure Regulators
- Back Pressure Regulators
- Flowmeters/Flow Controllers
- Pressure Safety Valves
- Pressure Relief Valves





## MEASURING TOOLS

---

Macnaught is an Australian owned company, established in 1948, and has been manufacturing Oval Gear Row Meters since the early 1990's servicing in Australasia.

With over 580 models, Macnaught offers a comprehensive range of Oval Gear Flow Meters optimised to suit a broad spectrum of industrial applications, predominately within the Fuel and Oil industry.

The combination of simple design, robust construction, highly accurate performance and the backing of an exceptional support network, ensures that Macnaught is globally recognised as an industry leader in the supply of fluid management solutions.

### WHY CHOOSE US?

- 24 Hour lead time-MX series
- M-Lock system
- Manufactured from billet
- Excellent customer support
- Made in Australia

### APPLICATION EXAMPLES

- Service and Fuelling trucks
- Fuel Depots
- Portable Fuelling Systems
- Bio-Diesel Blending and Production
- Lubrication Blending and Dispensing
- Hydraulic Fluid Dispensing and Test Stands
- Boiler and Generator Fuel Consumption
- Fuel Consumption for Mining Construction and Military Vehicles

Macnaught





# VALVES & ACTUATION



# VALVES

## BALL VALVES

- API 6A trunnion mounted and floating ball
- Flanged, screwed, socket and butt weld end connections
- Side and top entry designs
- Severe service, cryogenic and hazardous applications

## GATE, GLOBE & CHECK VALVES

- API 600 API 602 designs
- Bellows sealed and cryogenic applications
- Wafer, dual plate and axial flow check valves

## API 6A OFFSHORE HIGH-PRESSURE VALVES

- Topside and subsea applications
- Through conduit and expanding gate valves
- Top entry ball and swing check valves
- Modular DBB and instrument valves

## DOUBLE BLOCK & BLEED VALVES

- Largest range of DBB ball, plug and instrument valves
- All materials, all sizes, all pressures

## BUTTERFLY VALVES

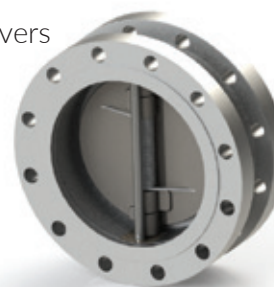
- Rubber or Teflon lined
- Double or triple offset designs
- On/Off or control applications
- Cryogenic and firesafe designs

## CONTROL VALVES

- Globe, ball and butterfly valve designs
- High pressure drop, severe service or low flow applications
- Choke valves

## OTHER PRODUCTS

- Sampling valves
- Chemical injection
- Line/spectacle blind systems
- Strainers - Y, T, basket and temporary
- Plug valves - lubricated, non-lubricated and DBB
- Pig launchers and receivers
- Level gauges





# LEADING VALVE BRANDS

---



**oliver**valves

**rotork**®



BEL VALVES

**SRI**



**GALPERTI**  
GROUP  
*The Original*



# VALVES SELECTION GUIDE

	SIZES				PRESSURE CLASS								MATERIALS								
	¾" - 2"	2" - 4"	4" - 24"	> 24"	150#	300#	600#	800#	900#	1500# / 1690#	2500# / 2680#	4500#	750/1500/2000 **	3000/6000**	Carbon Steel	Stainless Steel	Chrome	Exotic Alloy	Bronze	Double Iron	Cast Iron
API 600 Cast Steel																					
API 602 Forged																					
API 603																					
Pressure Seal																					
Y-Pattern																					
Bronze and Iron																					
Wafer Check/Dual Plate																					
Swing Check API 6D																					
Pipeline Piston Check																					
Bellowseal																					
Plug Lubricated																					
Plug Non-lubricated																					
HF Acid																					
Plastic Lined																					
Butterfly-Resiliant Seated																					
Butterfly-High Performance																					
Butterfly-Triple Offset																					
Ball Valve-THD & SW																					
Ball Valve-Flanged Flotating																					
Ball Valve-API 6D Trunnion																					
Ball Valve-Top Entry																					
Ball Valve-Metal Seated																					
Ball Valve-Lined																					
Ball Valve-VPort																					
Needle Valve																					
Cryogenic																					
Doble block & Bleed valves																					

## ACTUATORS

**rotork**®

**WESTLOCK**  
CONTROLS CORPORATION

**Limitorque**  
FLOWERVE

**SARASIN**  
**ACTOR**

**Bifold**®

**rotork**®  
Midland

# PNEUMATIC & ELECTRIC ACTUATION

---

Rotork is the market leading actuator manufacturer and flow control company that operates in any market where the flow of gases or liquids needs to be controlled including virtually all upstream and downstream activities ranging from offshore production facilities through refining and processing to transportation of finished products via pipelines or vessels.

## SOLUTIONS WE OFFER ARE:

- Electric Actuators
- Fluid Power Actuators
- Process Control Actuators
- Gearbox and Mounting Kits
- Instrumentation & Control
- Pneumatic Valves & Manifolds

## BRANDS WE SUPPORT ARE:

- Rotork
- Bifold
- Midland
- M & M

**rotork**<sup>®</sup>  
Midland

**Bifold**<sup>®</sup>







# GATES POWER TRANSMISSION

Tough industrial applications call for even tougher synchronous belts. Designed with varying tooth profiles to accommodate a variety of applications, find Poly Chain, rubber synchronous belts, and automotive EPAS when high-power transmission is desired. Leaner, meaner, and cleaner. No oil. No stretch. That's how Gates Synchronous Belts power progress.

## INDUSTRIAL HOSE

- Air/Water Hose
- Bunkering Hose
- LNG/Cryogenic Hose
- Offtake Loading Hose
- Process Chemical Hose
- General Hydraulic Hose
- Blow Out Preventer Hose
- Ultra High Pressure Hose







# FILTRATION



Part of the WINNELLIE Group

# OIL FILTRATION

Winnellie Hydraulics offers a range of low, medium, and high pressure filters, portable filtration systems, filter indicators and reservoir equipment for hydraulic and lube oil applications. Our comprehensive condition monitoring solutions include fluid contamination monitors, flowmeters, transducers, and transmitters for various mobile and industrial hydraulic and lube oil application. This complete range of products makes our solutions a total system health management, which includes a diagnostic, therapeutic, and preventative approach.

## THE RANGE INCLUDES:

- Pressure elements
- Return elements
- Air/Oil separators
- Intake filters
- Water removal elements
- Lube elements

All products are manufactured in full accordance with ISO9001-2008 as is the industry standard with a wide range of stock held in Australia to ensure lead times are minimised as much as possible







# DIESEL FILTRATION

At Winnellie Hydraulics, we're guided by a relentless drive to help our customers become more productive and achieve higher levels of profitability by engineering the best systems for their requirements. It means looking at customer applications from many angles to find new ways to create value. Whatever the motion and control technology need, Winnellie Hydraulics has the experience, breadth of product and global research to consistently deliver across Australasia.

No company knows more about motion and control technology than Winnellie Hydraulics.

## THE INDUSTRIES OUR FILTERS SERVES ARE:

- Automotive
- Marine
- Earthmoving
- Mining
- Oil and Gas



# GAS FILTRATION

Peco Facet Gas Filters is equipment designed to treat the gas coming from gas wells and also the sour gas in the treatment plants aimed for the removal of solid contaminants and slug liquids.

Peco Facet Gas Filters are simple and easy to maintain, normally supplied as skids with all the instrumentation needed for the perfect control and maintenance for the unit.

They cover a wide range of compatibilities and offer solids retention capabilities from 0.3 up to 750 micron, with efficiencies from above 99.5% to 100%. Flow rates up 300,000 scfm.

Built to AS code, Section VIII construction, stamped and certified or CE marked, constructed of carbon steel or stainless steel.





# FILTERS, STRAINERS & MEMBRANES

We offer supply and engineering support for a complete suite of filtration products for a wide range of onshore & offshore applications. The manufacturers we represent have established a reputation for quality and performance which is reflected in their approved supplier status with many of the world's top tier operators.

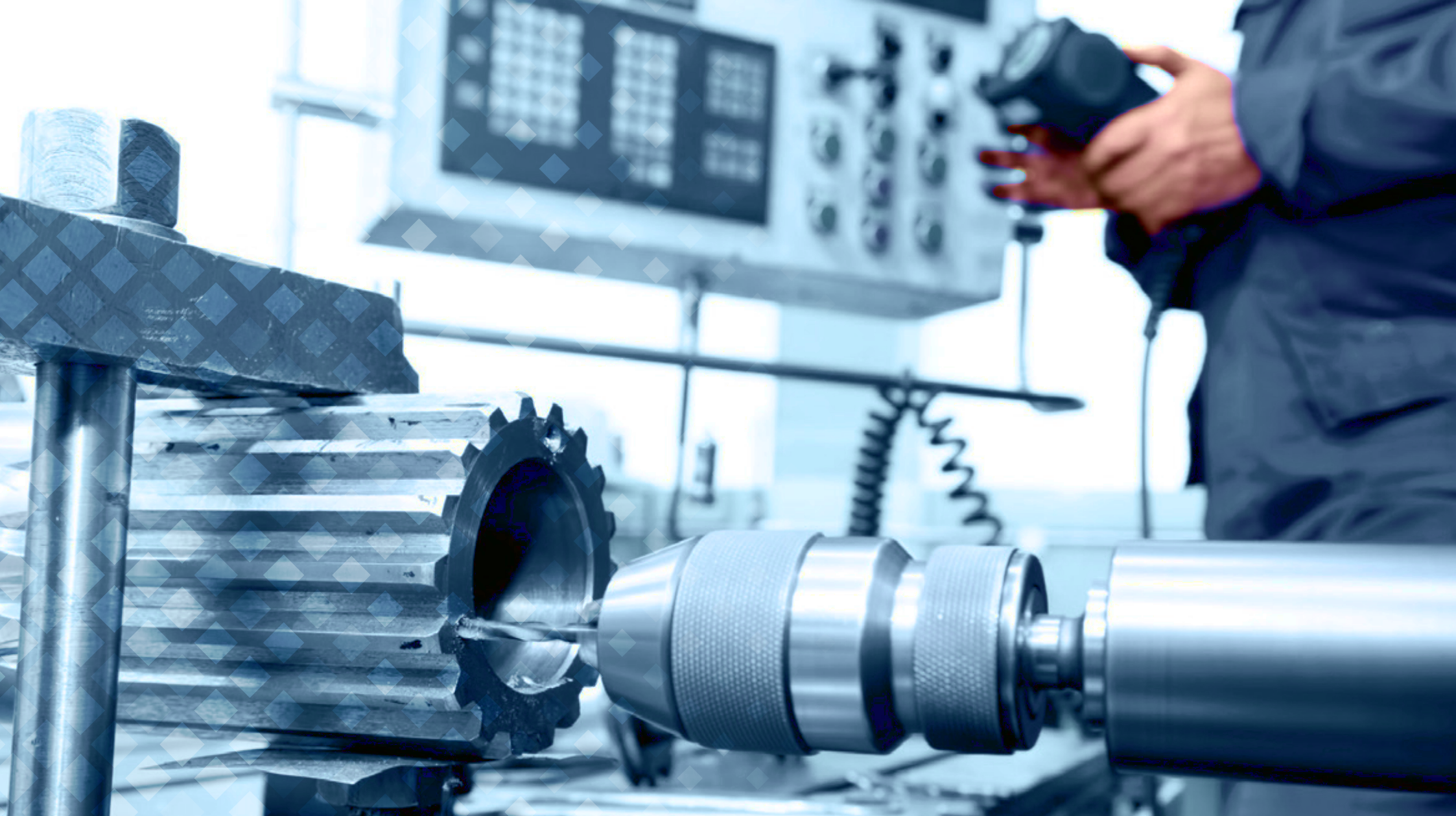
THESE INCLUDE:

**Parker**

**EATON**







# HYDRAULICS

**WALTAN**  
TOOLS & EQUIPMENT  
Part of the WINNELLIE Group

# HYDRAULIC COMPONENTS

As the specialist in hydraulics components we offer a broad range of solutions ensuring down time, productivity and cost reduction are at the forefront of our offering. With an extensive network of trusted hydraulic suppliers we offer application specific expertise to produce specialised solutions in complex environments. With over 30 years experience in the mining and oil & gas industry Winnellie Hydraulics have you covered.

As the distributors for Parker & Rexroth we offer a range of hydraulic solutions including:

## CYLINDERS

- Enerpac Cylinders - High pressure
- Agriculture Cylinders - Low pressure
- Filter Press Cylinders
- Double and Single Acting Cylinders

## DIRECTIONAL VALVES

- Check Valves
- Flow Control Valves
- Servo Valves
- CETOP 3, 5, 7 \* Valves

## MOTORS & PUMPS FIXED DISPLACEMENT

- Gear
- Vane
- Gerotor
- Axial Piston
- Radial Piston

## MOTORS & PUMPS VARIABLE DISPLACEMENT

- Axial Piston
- Radial Piston
- Power Units







# NITROGEN ACCUMULATORS

Accumulators provide a means of regulating the performance of a hydraulic system. They are suitable for storing energy under pressure, absorbing hydraulic shock, dampening pump pulsation and flow fluctuations.

Bladder or diaphragm accumulators provide excellent gas and fluid separation ensuring dependable performance, maximum efficiency, and long service life.

Save money using an accumulator by:

Eliminating the need for large hydraulic pumps and electric motors. An accumulator in the system ensures the correct volume of oil at the correct working pressure, even in emergency situations and compensates for variations in leakage and temperature, dampens pressure and flow pulsations, maintains system pressure when the hydraulic pump is switched off and provides hydraulic suspension.

As the oldest manufacturer of hydraulic accumulators, OLAER provides a full range of bladder accumulators, membrane accumulators and piston accumulators. They can be used in a wide range of applications such as energy storage, pulsation dampening or surge alleviation. The OLAER group of accumulators has a very strong presence in highly demanding industries, such as Oil & Gas, Mining and Defence.





# MATERIAL TRANSFER

 **WALTAN**  
TOOLS & EQUIPMENT  
Part of the WINNELLIE Group



# LUBRICATION EQUIPMENT

## MATERIAL DISPENSING AND LUBRICATION SYSTEMS

Graco products move, measure, control, dispense and apply a wide range of fluids and viscous materials used in vehicle lubrication, commercial and industrial settings.

### HUSKY DIAPHRAGM PUMPS

- 20% increase in fluid flow compared to previous Husky models in the range
- Up to 5 times longer diaphragm life compared to other diaphragm pumps in its class
- Expanded material offering to handle endless applications from Australasia

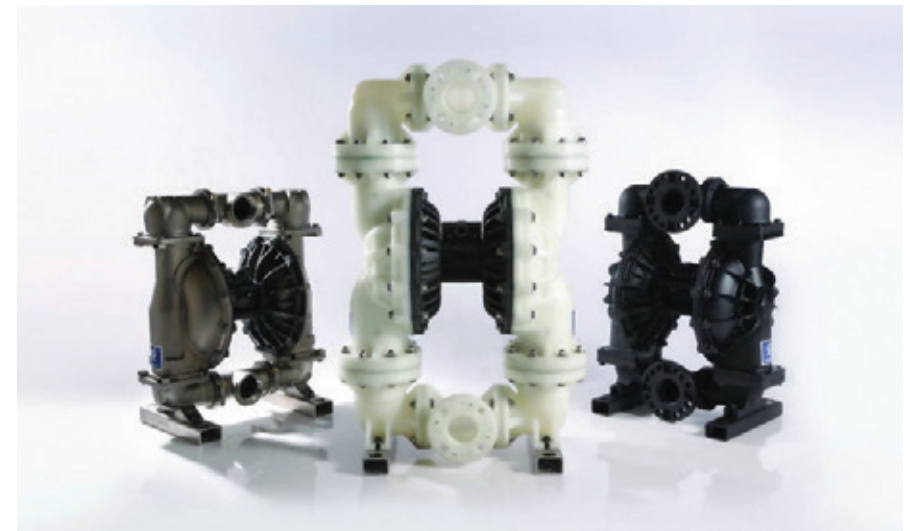
### FIRE-BALL® AIR OPERATED PISTON PUMPS

- The industry standard in lubrication equipment for ourstanding performance and reliability
- Designed for applications requiring continuous duty operation
- Available in ratios of: 3:1, 6:1, 10:1, 50:1, 75:1

### XD SERIES HOSE REEL

High performance hose reels designed for heavy duty jobs that require high frequency use, extra strength and durability.

- Dual pedestal frame
- Metal spool
- Rugged indoor and outdoor use
- Narrow footprint
- Sealed springs
- In-field spring adjustment
- Non-sparking ratchet
- Sealed roller bearings





*The Right Connection®*

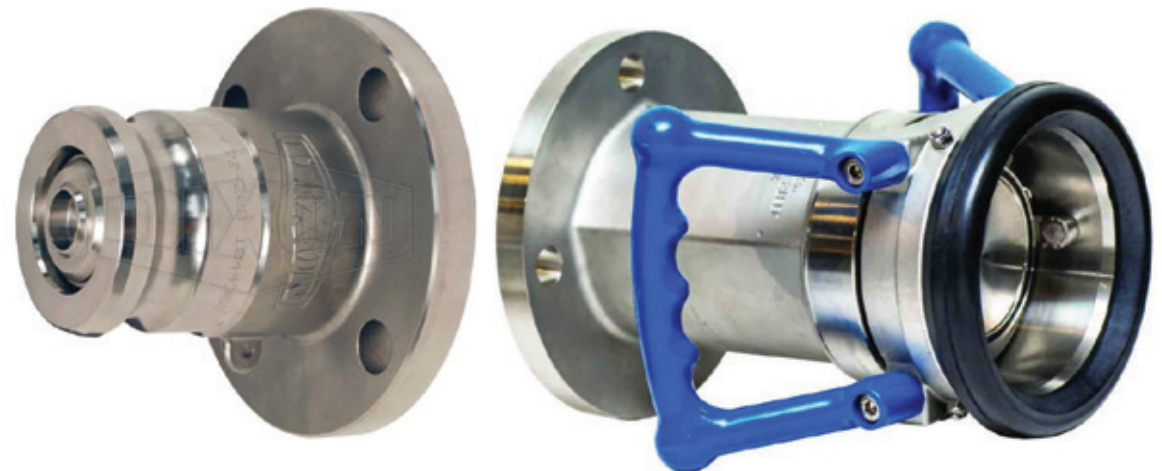


# RIG APPROVED HOSE & FITTING

Dixon's rig-safe range of hose and fittings offers NATA and DNV approval ensuring quality is never compromised. All components are factory tested in accordance with AS, designed for extreme conditions.

## THE DIXON RANGE INCLUDES (BUT NOT LIMITED TO):

- Rigboss Series Hose
- Ball/Plug Valves
- Drill water
- Potable water
- Dry Disconnect No-Spill Fittings
- Dry Disconnect No-spill Flanges
- Vent-Lock Camlocks
- Minsup Fittings
- Hammer Unions





# INDUSTRIAL HOSE

Winnellie Hydraulics is a specialist designer, manufacturer and supplier of hose restraints and cable stockings servicing both in Australasia.

- Hose restraints are used to restrict hose whip on high-pressure hoses if the hose connection coupling or the hose fails.
- Cable stocking (also known as cable grips or cable socks) are an effective means of handling cable that needs to be pulled, attached or secured.
- With our expertise and experience, gained from involvement in the mining industry, we can assist you to select the best product for your needs.

Most of our product offering is custom made hand woven to strict quality standards to meet your individual requirements and specifications. The exception to this are our two-eye hose restraints which come in a range of standard sizes





# ANCILLARY EQUIPMENT





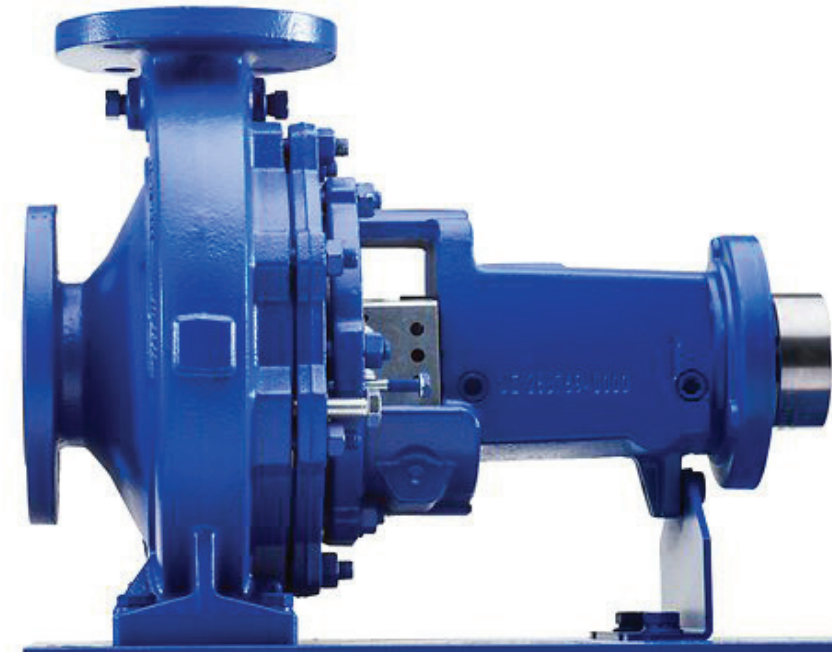
# KSB CENTRIFUGAL PUMP

KSB Aktiengesellschaft has been manufacturing centrifugal pumps for more than 110 years. Their product range has been extended continuously. Today, almost all of KSB's pumps are based on the principle of the centrifugal pump. The KSB Group exceeds the energy saving objectives of future EU regulations, which translates into large savings for Winnellie Hydraulics customers.

## CENTRIFUGAL PUMP TYPES

The following pump types are also referred to as centrifugal pumps:

- Radial flow pumps
- Diagonal flow pumps (also called semi-axial flow pumps)
- Side channel pumps
- Peripheral impeller pumps
- Axial flow pumps (also called propeller pumps)





# FLANGES, GASKETS & BOLTS



## FLANGES

We offer Carbon Steel, 316 Stainless Steel, Duplex, Super Duplex and 6MO flanges, flange blinds and more for onshore & offshore applications from a wide range of OEM's across Singapore, UK, USA, Korea and locally in Australia.



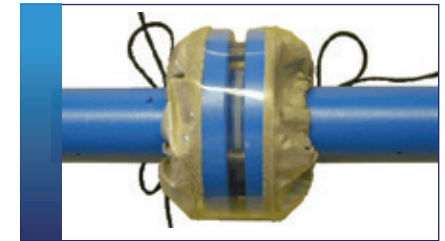
## GASKETS

We offer Paper, Metallic, PTFE, Spiral Wound, Soft seal gaskets and more for onshore & offshore applications from a wide range of OEMs.



## STUD BOLTS

We offer Stainless Steel, Hot Dip Galvanised, Mild Steel stud bolts for onshore & offshore applications from a wide range of OEM's across Singapore, UK, USA, Korea and locally in Australia.



## FLANGE COVERS

### FEATURES

- Easy installation to valves and flanges
- Controls leaks and sprays in chemical pipelines
- Early warning visible indication of leakage through colour change
- Exclusive contour shape
- UV and water resistant
- High temperature fabric



- Grayloc Clamp Connectors
- Grayloc Compact Flanges
- Grayloc Closure Systems
- Nozzle Check Valves
- Universal Ball Joints





# RENTAL TOOLS



Part of the WINNELLIE Group





## Cassette Wrenches

A/F Size	Max Torque	Model Number	Daily Hire Rate
	2766Nm	W2000PX DRIVE UNIT	\$54.00
35MM 1 3/8"	2766Nm	W2106X CASSETTE	\$49.00
36MM 1 7/16"	2766Nm	W2107X CASSETTE	\$49.00
41MM 1 5/8"	2766Nm	W2110X CASSETTE	\$49.00
46MM 1 13/16"	2766Nm	W2113X CASSETTE	\$49.00
55MM 2 3/16"	2766Nm	W2203X CASSETTE	\$49.00
	5661Nm	W4000PX DRIVE UNIT	\$65.00
50MM 2"	5661Nm	W4200X CASSETTE	\$55.00
60MM 2 3/8"	5661Nm	W4206X CASSETTE	\$55.00
63MM 2 1/2"	5661Nm	W4208X CASSETTE	\$55.00
65MM 2 9/16"	5661Nm	W4209X CASSETTE	\$55.00
70MM 2 3/4"	5661Nm	W4212X CASSETTE	\$55.00
75MM 2 15/16"	5661Nm	W4215X CASSETTE	\$55.00
		W8000PX DRIVE UNIT	\$75.00
85MM	11484Nm	W8085MX	\$65.00



## Square Drive Wrenches

Model Number	Drive Size	Max Torque	Daily Hire Rate
S1500	3/4" DRIVE	1952Nm	\$85.00
S3000	1" DRIVE	4373Nm	\$130.00
S6000	1 1/2" DRIVE	8338Nm	\$195.00



## Torque Pumps

Model Number	Power Source	Daily Rate
ZA4208TX	AIR	\$95.00
TQ700E	ELECTRIC	\$95.00
ZU4208TX-Q	ELECTRIC	\$95.00
*Includes Twin Hose Set		

# HIRE CAPABILITY

Hydraulic Torque Wrench Systems

BEST HIRE  
RATES,  
LARGEST  
RANGE!



Available for immediate mobilisation  
for shutdown and maintenance  
campaigns





## Flange Alignment Tools

Maximum Lifting Force (ton)	Model Number	Minimum bolt Size (mm)	Flange Wall Thickness	Weight (kg)
1	ATM-2	16	14-82	1.6
4	ATM-4	24	30-133	8.6
9	ATM-9	31.5	93-228	4.5



## Flange Spreaders

Max Spreading Force (ton)	Model Number	Tip Clearance (in)	Max Spread (in)	Type	Weight (kg)
8	FSM-8	.24	3.16	Mechanical	6.5
14	FSH-14	.24	3.16	Hydraulic	7.1



## Nutsplitters

Bolt Range (mm)	Hexagon Nut Range (mm)	Capacity (ton)	Model Number
M6 - M12	10 - 19	5	NC-1319
M12 - M16	19 - 24	10	NC-1924
M16 - M22	24 - 32	15	NC-2432
M22 - M27	32 - 41	20	NC-3241
M27 - M33	41 - 50	35	NC-4150
M33 - M39	50 - 60	50	NC-5060
M39 - M48	60 - 75	90	NC-6075



## Jacks & Pumps

All sizes and types

# HIRE CAPABILITY

Hydraulic Torque Wrench Systems

BEST HIRE  
RATES,  
LARGEST  
RANGE!

## Hire Capability Checklist

- ✓ Available for same day pick up
- ✓ NAIA certification as standard
- ✓ Industry leading Enerpac quality
- ✓ Technical support available 24/7
- ✓ Free of charge travel to NT, WA, SA, NSW, QLD & VIC

## Also Available



Bolt Tensioners



Flange Facing Tools



NorBars

# URGENT SUPPLY NEEDS?



**GLOBALLY  
CONNECTED**

**PUT OUR EXPERTISE TO WORK FOR YOU**

[sales@waltan.com.au](mailto:sales@waltan.com.au)

- Valve & Actuation Suppliers
- Hydraulics Suppliers
- Instrumentation





08 8297 9700  
[www.waltan.com.au](http://www.waltan.com.au)